



Central and  
North West London  
NHS Foundation Trust

# Hillingdon External Services Scrutiny Committee – 14<sup>th</sup> November 2017

**Maria O'Brien – Executive Director,  
Community Services, CNWL**  
**Kim Cox – Hillingdon Borough Director**



*Wellbeing for life*



Overview of Service Updates Provided

Hillingdon CAMH's

Hillingdon Community Health Adult Services

Hillingdon Community Children's Health Service

Hillingdon Mental Health Services





## Camh's Waiting Times



78% of children  
seen within 18  
weeks of  
referral – target  
is 85%



October 2016  
this was 47%



70% positive  
outcomes after  
treatment – ie  
discharged from  
Mh services



Increased  
capacity for face  
to face sessions

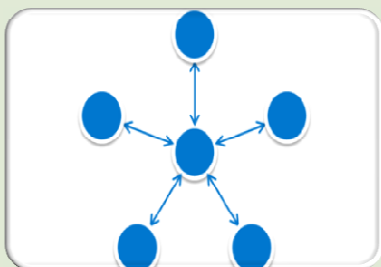


Increased flow  
in system





## CAMHS Eating Disorders Developments



New Specialist service commissioned across CNWL in 2016. Hub and spoke across the 5 boroughs



Urgent referrals seen within a week



Routine referrals within 4 weeks



Specialist team of CAMHS and eating disorders clinicians





## Camh's Out of Hours and Crisis Service

New development has OOHS nurses and doctor working across the 5 CNWL boroughs

Has improved urgent response to CYP at Hillingdon A&E

Reduced breaches at Hillingdon Hospital A&E

CAMHS trained staff now see CYP

Positive feedback from YP and families

As of November 2017 additional day time staff enhanced to allow for more intensive community response preventing admission





**CAMHS LD Team**

**Developments in 2015/16 mean Children and YP with a LD and challenging behaviour now have service.**



**Multi disciplinary team including Psychology, behaviour analysts, paediatrician session and psychiatry sessions**

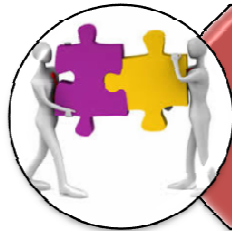


**Has allowed work with CYP Family, school and social care services**





## Community Adult Services



HHCP is now established and we continue to put in place the practical things needed to ensure we work effectively as a single entity



The 15 Care Connection Teams are settling in and are working to keep our older patients in their own homes for as long as possible



Hillingdon Home 2 Assess are currently leading across the NWL patch in taking the highest number of patients home on this new pathway



## Children's Community Services



Pilot out of  
hours Health  
Visiting  
support line  
for 3 months  
starting  
December



Children's  
Teams now  
amalgamated  
into 0-19 hubs



Fourth  
highest  
continued  
breastfeeding  
rate at 6-8  
weeks  
nationally



Children's  
contact centre  
in operation  
since start  
October





## Hillingdon Mental Health Services CQC update



CQC re-inspection Older Adult MH services in January this year resulted in a 'good' rating



Community Mental Health Team re-inspection in May this year was the final part and as a trust we have now been re-rated as

**good**



Community MH re-inspection did not identify any improvements specific to Hillingdon MH





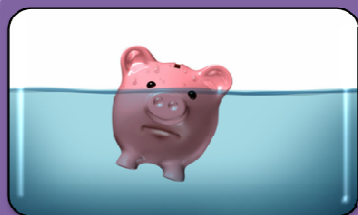
## Hillingdon MH- Current Risks



Inpatient bed pressures continue



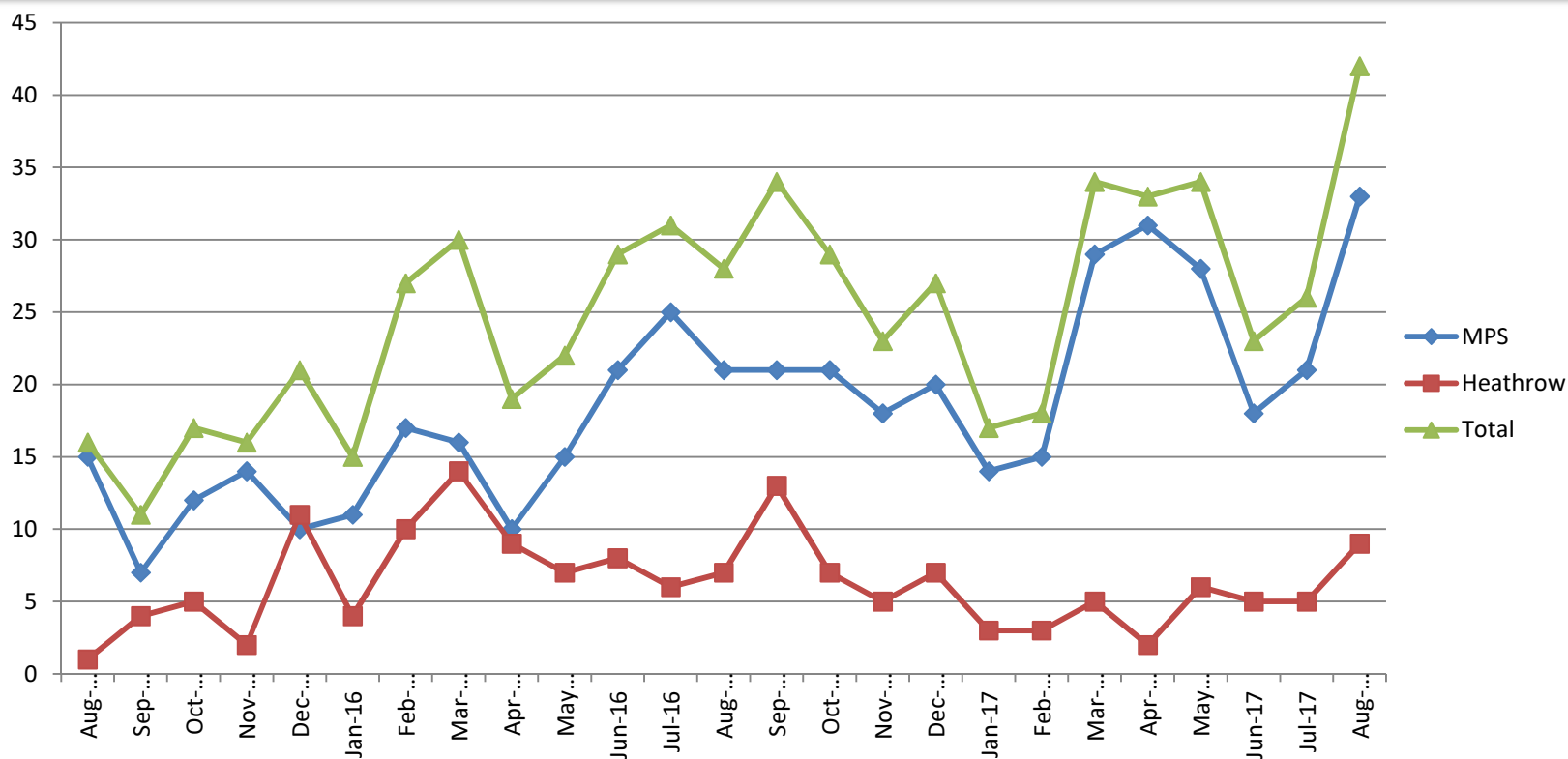
Nurse recruitment remains a challenge,  
despite a now low turnover



Financial pressures persist



## Number of section 136 presentations via Hillingdon MH Suite





# Key 2017/18 Priorities - Hillingdon

